



Teenage School Holiday Programs (12- 17 years old)

Date:

Tuesday 28 June 2016

:

5-6 hours during the day

Cost: \$200 (Plus GST):

Ratio 1:3

For 1:1 ratio: \$310 (plus GST)

What to bring:

Please bring lunch, snacks, drinks and hat.

Places available: 6

Activity: Side Tracked

Enjoy Laser tag/ bowling/ arcade games at Side Tracked, Oakleigh.



Date:

Thursday 30 June 2016

Time:

5-6 hours during the day (times TBC)

Cost: \$200 (Plus GST):

Ratio 1:3

For 1:1 ratio: \$310 (plus GST)

What to bring:

Please bring lunch, snacks, drinks and hat.

Places available: 6

Activity: Gravity Zone- Trampoline Centre

Gravity Zone is an indoor trampoline centre that has an indoor children's play area, a trampoline foam pit, basketball trampoline areas and a variety of other trampoline areas to explore!



Date:
Tuesday 5 July 2016

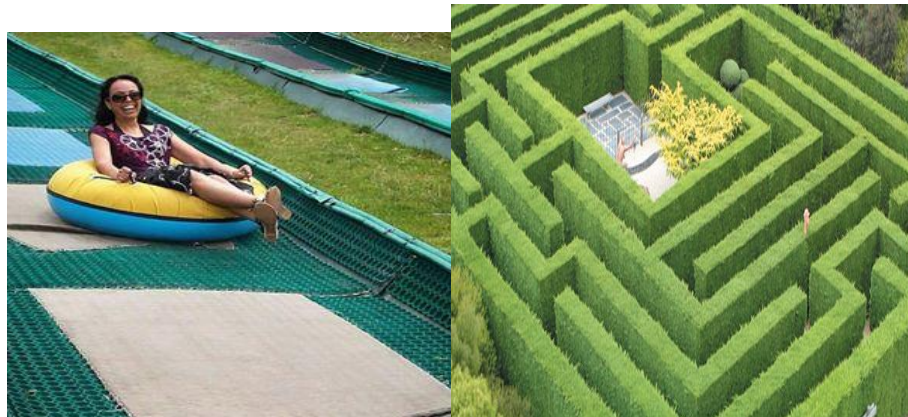
Time:
5-6 hours during the day

Cost: \$200 (Plus GST):
Ratio 1:3
For 1:1 ratio: \$310 (plus GST)

What to bring:
Please bring lunch, snacks, drinks and hat.

Places available: 6

Activity: **Enchanted Maze**
Enjoy a walk through the Enchanted Maze and the Tube Slides.



Date:
Thursday 7 July 2016

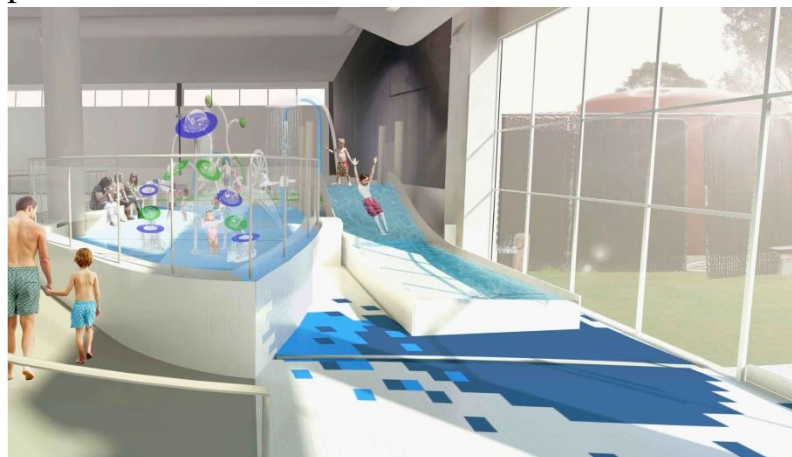
Time:
5-6 hours during the day
(times TBC)

Cost: \$200 (Plus GST):
Ratio 1:3
For 1:1 ratio: \$310 (plus GST)

What to bring:
Please bring lunch, snacks, drinks and hat.

Places available: 6

Activity: **Wave Pool, Cheltenham**
Enjoy the waves at the Cheltenham wave pool and have a picnic lunch



Terms and Conditions:

1. Activity may be changed at short notice if the weather is not suitable.
2. Pick up & drop off locations will be determined upon client registration to find the most suitable and central location. If possible we will try to arrange pick up from the family home.
3. Registration of interest in all available places must be received before program activity dates can be confirmed. Fees are payable in full once activity dates are confirmed.
4. **Staffing ratios are 1 staff to 3 clients; if your child requires 1:1 support, the following program cost will apply. 1:1 support cost of \$310 (plus GST) per day.**

Respite Funding

Participation in holiday programs can often be supported through one of the following options;

1. **Alfred Health Carer Services Recreational Respite Program** – This program supports carers of a young person with a disability aged between 6 and 24 years who has high support needs in one of the following areas: medical, physical, or challenging behaviours. Family members and case managers can call 1800 052 222 directly to request funding.
2. **Individualised Support Program (ISP) or Respite for Older Carers (ROC)** – These programs directly support people with disabilities and include funding for respite or community access activities. Call your support coordinator or case manager for further information. For families who self-manage their funds, contact the After-Care Respite Coordinator directly on the number below.

To register your interest in an activity please contact -

After-Care Respite Coordinator

www.after-care.com

inhome@after-care.com

Phone: 1300 464 663

Fax: 1300 732 744

